



AYAHA TRADING COMPANY

Design & Build Enterprises

Bringing Future Into Present

Design | Fit-Out | Furniture

Timeline



Industries we work with



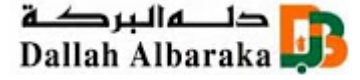
Corporate

Healthcare &
Wellness

Education

Hospitality &
Retail

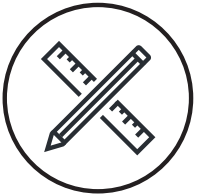
Our Client



AYA Solutions



Location Advisory



Interior Design



Fit-Out Work



Furniture





Location Advisory

We know choosing a location for your business isn't easy. Our AYA Location Advisory team identify the best locations for your operations, employees and customers to drive your business objectives forward.

We can support you with :

- ⑧ Site Recommendation.
- ⑧ Initial Analysis and Site Evaluation Report.
- ⑧ Building Specifications and Objectives.
- ⑧ Initial Site Visits.
- ⑧ Matching Needs Upon Budget.
- ⑧ Finding Great Sites.
- ⑧ Real Estate Consultation Service (AYA Partnership Companies).



Interior Design

Design is the Spirit for any project , and each project has his own Design ID, The concept of our interior design team is to understanding people's behavior inside business to create functional spaces within building.

We can support you with :

- ⊗ Define Organizational Brief.
- ⊗ Recommend Best Capacity Space.
- ⊗ Preliminary Layout & Schematic Design.
- ⊗ Mood Board Presentation.
- ⊗ 3D Rendering Perspective.
- ⊗ Architectural Concept Design (Preliminary & Detailed).
- ⊗ MEP Concept Design (Preliminary & Detailed).



Fit-Out Work

Professionalism is our formula. We are in AYA making interior spaces suitable for occupation by applying the process of (Initiating, Planning, Executing, Monitoring & Controlling, and Closing). We deliver safely and deliver quality.

We can support you with :

- ⊗ Project Management.
- ⊗ Design & Build Turnkey Project.
- ⊗ Interior Fit-Out & Office Refurbishment.
- ⊗ General Architectural Work.
- ⊗ MEP General Works (Mechanical , Electrical, Plumbing).
- ⊗ Joinery Works & HVAC Works.
- ⊗ Lighting & Metal Decoration Work.
- ⊗ Exterior Work & Facade Work.
- ⊗ Fire Alarm, Fire Fighting System & IT Works



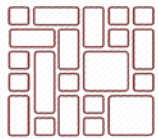
Furniture

Furniture is the most important item that will cover and fill out the space at any project. AYA provides a wide range of high quality, functional, attractive and modern office furniture, healthcare furniture and educational furniture.

We can support you with :

- ④ Office Furniture Solutions.
- ④ Healthcare Furniture & Education Furniture.
- ④ Auditorium & Public Areas Furniture.
- ④ Hotels & Restaurant Furniture.
- ④ Accessories & Custom Made Furniture.
- ④ Archiving & Partitions Furniture Solutions.
- ④ Fixed Furniture & Equipment (FFE).

How We Create Value?



Space

We opens new ideas to maximize the return on your investment.
Analyze space for maximum efficient utilization with business.



Functional & Practical

We work better together, we get more done together.
Functional engineers with expert Practical technical team.



Design

We design to add value , we design beyond limit ,we visualize projects from start to finish, we design how it works.
Creative, Inspire, Trendy & efficient designs drawing.



Quality

We keep working above the line, we don't know below.
We measure and improve results of Quality assurance, Quality control, Quality management.



Planning

We don't have wishes, we just only have goals.
Planning process to address all details and activities.



Furniture

We have from (A to Z) furniture imagination which will get you everywhere.
International combination of systems and solutions with wide range of unique selections.



Balancing

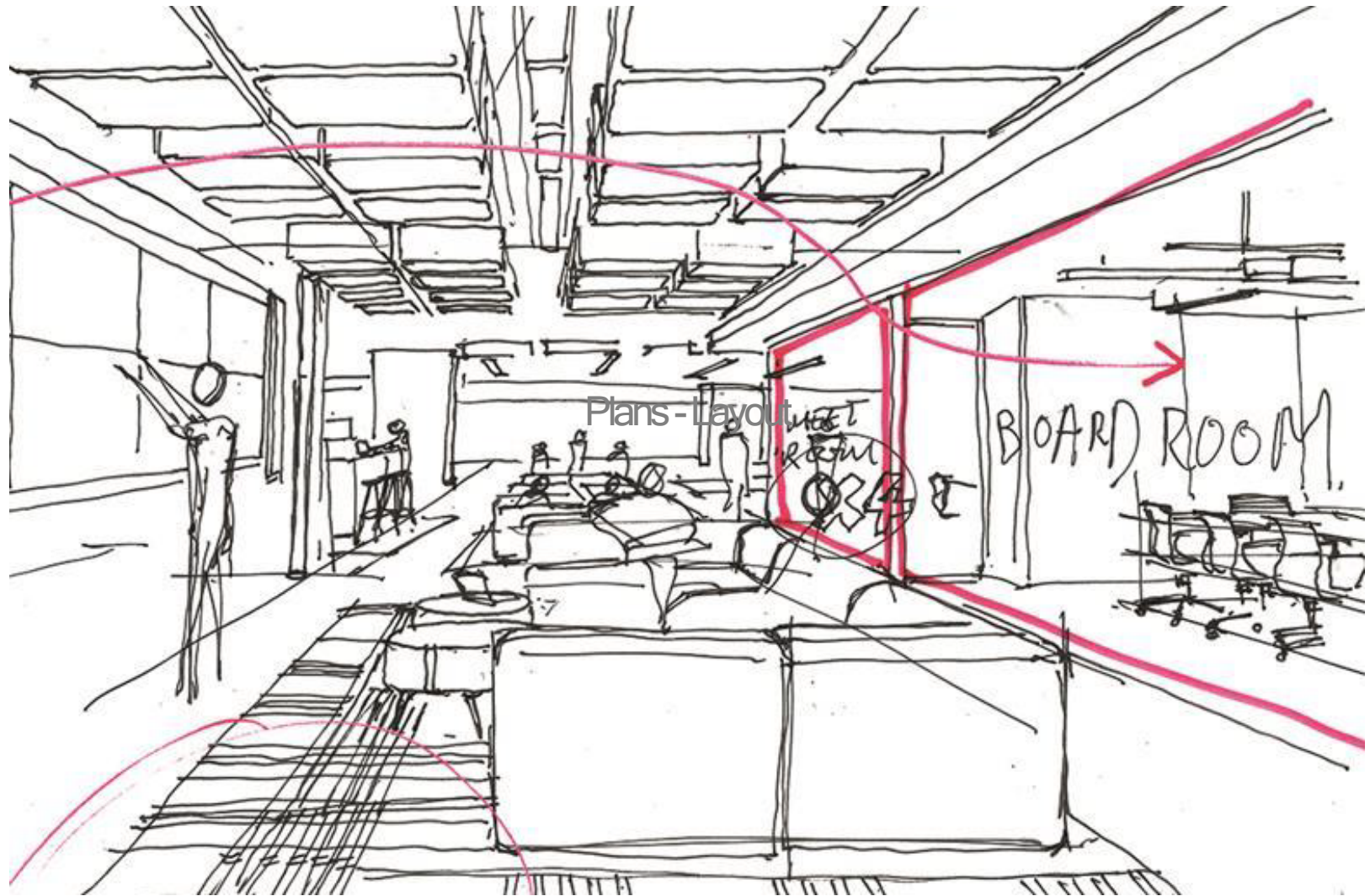
We keep your balance and keep moving the processes of your project.
Balancing & matching your budget with your scheduled time.



Time

We don't count the days , we make the days count.
Handover project on Time.

Case Study



Plans - Layout



Reception Area - Mood



Welcoming space and Comfortable with integrated light fittings and features.

First impressions count with opportunities to communicate company branding and values to visitors, and incorporate them into furniture, joinery items, finishes and technology.



Interaction with touch screens to publications for visitors whilst waiting.

Meeting Rooms - Mood



Sophisticated feel for client and more formal meeting.

A professional and sophisticated feel to more formal spaces. The space is enhanced by possible feature wall, ceiling and floor finishes.



Decorative light with folding doors for multi purpose meeting rooms.

lighting solutions can control all aspects of a meeting rooms from daylight to electric light with smooth comfort reflection for seating space.

Managing Director - Mood

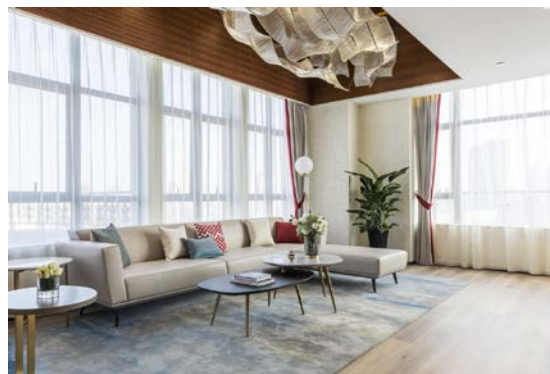


Light dark timbers and executive level finishes.

The managing director suite offers a luxurious upmarket hospitality and sophisticated feel for entertaining clients and important persons for the business.

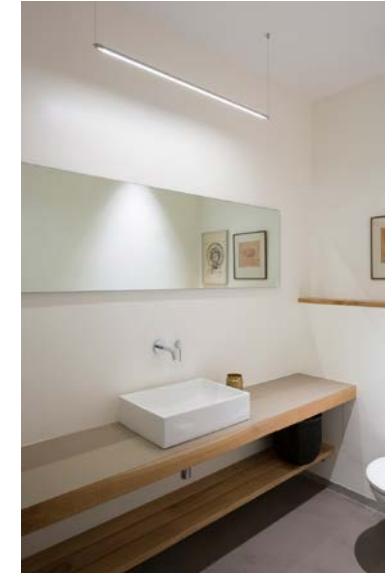


Contrast of light and dark finishes provides modern look.



Welcoming and strategic use of colors.

Bathrooms - Mood



Bathrooms are finished in feature color, monolithic vanity top / basin arrangement and large mirrors to maintain modern clean line aesthetics, light and tranquil feel.



Natural materials of marble, wood & ceramic tiles.

Break Area - Mood



Strong geometry color with differentiates from the general office.

Staff are able to exchange ideas & interact through informal conversations with colleagues in a stimulating environment when grabbing a coffee, Staff events can also take part in these areas and become the central hub of the office.

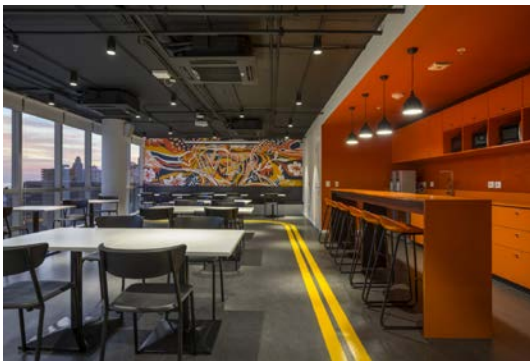
Informal Meeting Spaces - Mood



Bespoke furniture with integrated AV.



Informal meeting spaces create chances to discuss ideas and create effective team working together inside practical environments.



Lighting, ceiling, finer details and collaborative seating arrangements defines the area.



Meeting pod with informal furniture layout.



Workplace Area - Mood



Manifestation graphics to glazed fronts.



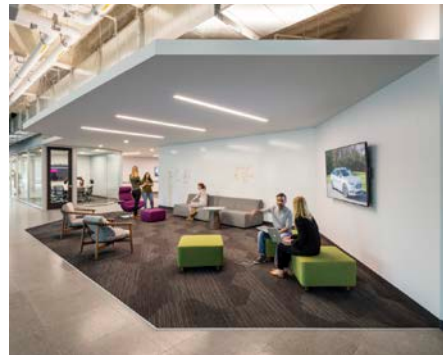
Smart modern furniture with flexible systems.



Sophisticated, unique, elite & colorful office furniture.

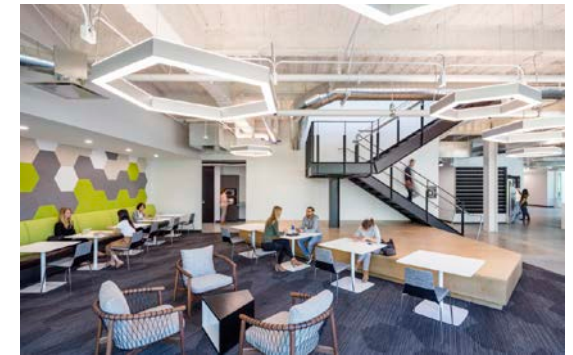


Feature in open plan space.



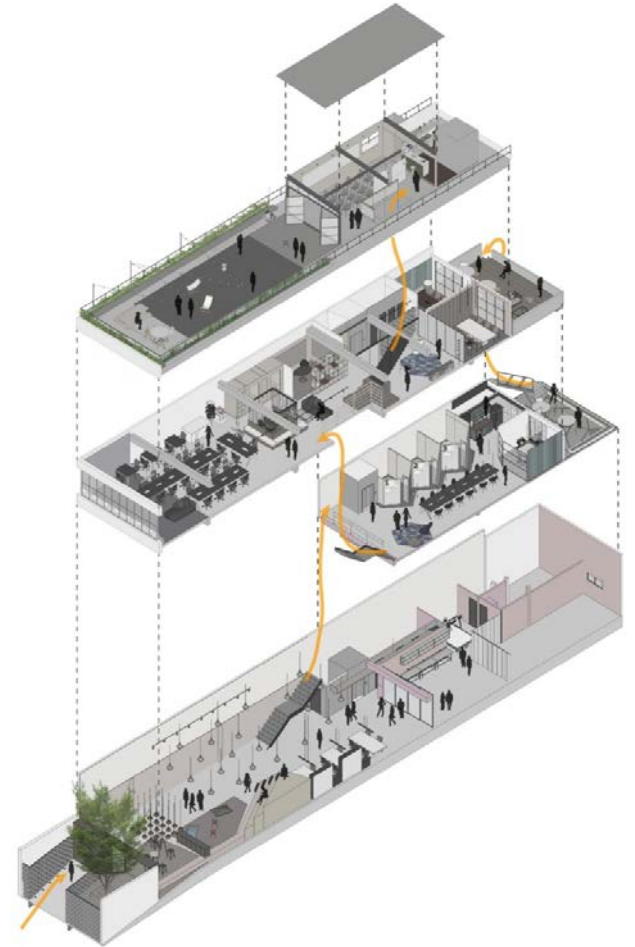
Writable walls with smart wall paint.

A stimulating working area with a mixture of static graphics, live projection feeds, textures and colors, create a dynamic and professional office environment.



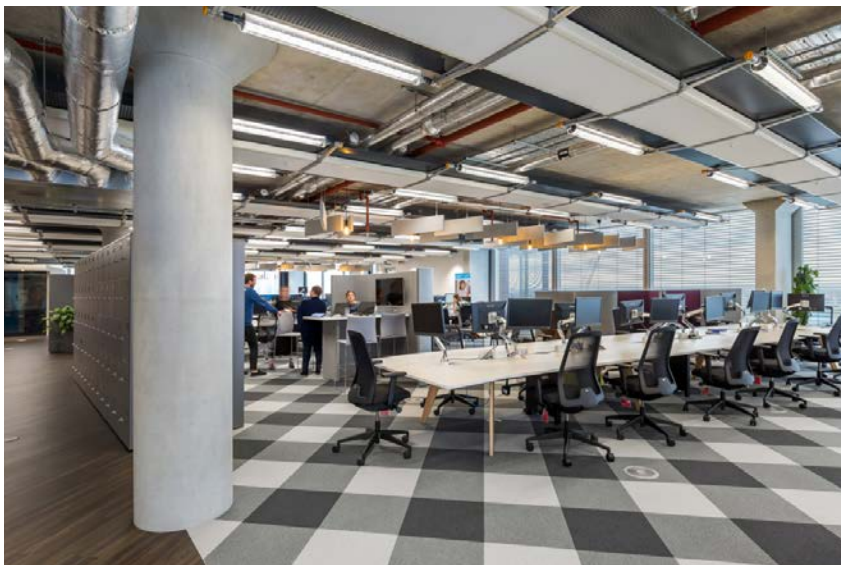
Integrated & collaborative Informal lounge spaces.

Sketch's - Renders



oktra

UNICEF
London
2018
NGO
2,370 sqm



Spacewell

Ingram Micro
Dubai
2019
Technology
3,160 sqm





Confidential
Costa Rica
2018
Consultancy
12,000sqm



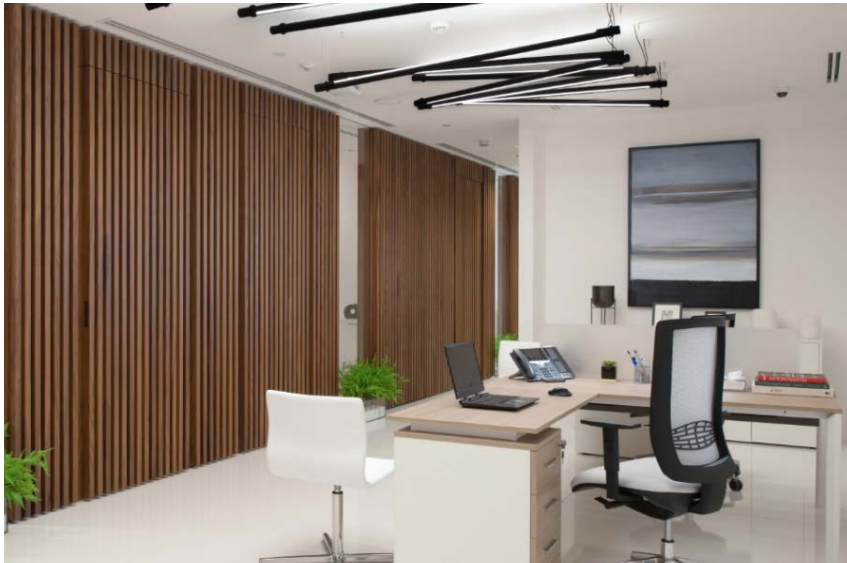


**Ansab
Al Khobar
2022
Head Office
12,000 sqm**





Al Nahdi
Jeddah
2019
Private Office
1,000 sqm



Bustanji Motr
Amman
2017
Showroom
4,000 sqm





F.Shaker
Riyadh
2018
Private Office
500 sqm





Al Tayar
Jeddah
2017
Business Center
1,200 sqm



Our Partners



Thank You

Contact Us

AYAHAY TRADING COMPANY



 +966 56 047 7856
 Info@ayaha.com
 www.ayaha.com  [ayahatradingco](#)
 www.ayaofftec.com

Address

 Short Address : **JDBA2786**
 Building No. **2786**
 **Quraysh Street**
 **6142 Al Bawadi District**
 **Postal Code 23531**
 **Jeddah , Kingdom of Saudi Arabia**